

# CuratOR® SC430-PTR

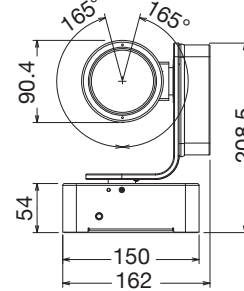
## Specifications

Camera Head	Image Sensor	1/2.3 type CMOS, single chip type	
	Effective Pixels	3840 x 2160	
	Zoom	Optical 30x motorized zoom	
	Focal Length (f=)	4.6 (W) - 135 (T) mm	
	Horizontal Field of View (HFOV)	68 (W) - 2.6 (T) deg.	
	Minimum Object Distance (M.O.D.)	1500 (W) - 1500 (T) mm	
	Filter Diameter	72 mm	
	Focus Control	Auto, Manual	
	Iris Control	Auto, Manual	
	Pan Range	+/-170 deg.	
	Tilt Range	+90 / -30 deg.	
	Roll Range	+/-165 deg.	
	Pan Speed	8.6 - 0.05 deg/s, 15 steps	
	Tilt Speed	8.6 - 0.05 deg/s, 15 steps	
	Roll Speed	30 - 0.2 deg/s, 15 steps	
Features & Functions	Built-in microphone	Yes	
	Image Control	Auto Level Control (ALC), ALC Mask, BT2020 Emulation, White Balance, Sharpness	
	Gain	Auto, Manual (0 - 26 db)	
	Shutter Speed	1/1 - 1/10000	
Video Format	Picture Flip/Mirror	Normal, Flip, Mirror, 180deg	
	4K UHD	HDMI: 2160/59.94p, 2160/50p SDI: 2160/59.94p, 2160/50p	
General	FHD	HDMI: 1080/59.94p, 1080/59.94i, 1080/50p, 1080/50i SDI: 1080/59.94p, 1080/59.94i, 1080/50p, 1080/50i	
	Output Terminals	HDMI x2, BNC (Quad Link 3G-SDI), BNC (3G-SDI), Audio	
General	Remote Control	LAN, RS-232C, IR remote	
	Power Requirements	DC 24 V (bundled AC adapter)	
	Maximum Power Consumption	86 W	
	Dimensions	Camera Head and Mount	162(W) x 211.5(H) x 204.5(D) mm
		Camera Control Unit	212(W) x 88(H) x 270(D) mm
	Net Weight	Camera Head and Mount	3.2 kg
		Camera Control Unit	3.5 kg
	Hole Spacing (VESA Standard)	Camera Mount	100 x 100 mm
	Operating Temperature	0 - 40°C	
	Operating Humidity	20 - 80%RH	
	Certifications & Standards	IEC60601-1, CE, CB, FCC-A, CAN ICES-3 (A), RoHS, WEEE, EAC	
	Supplied Accessories	AC adapter, AC power cord (2 m), Signal cable (25 m), IR remote, Rubber feet x 4, ND filter, Instructions for Use	
Warranty	2 Years		

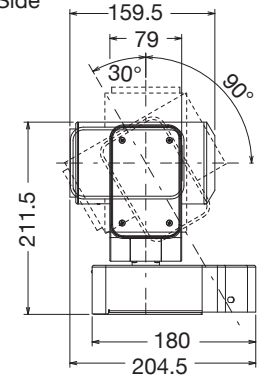
## Dimensions (Unit : mm)

### Camera Head and Mount

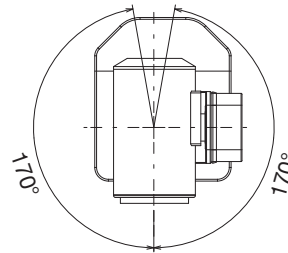
Front



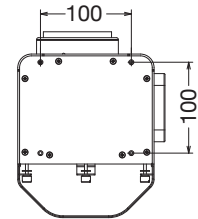
Side



Top

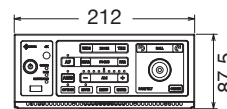


Bottom

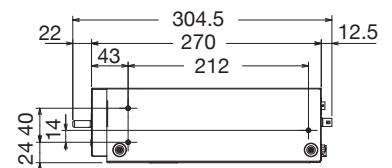


### Camera Control Unit (CCU)

Front



Side



Moosacherstrasse 6, Au - 8820 Wädenswil  
 Telefon +41 (0)44 782 24 40 - Fax +41 (0)44 782 24 50  
[www.eizo.ch](http://www.eizo.ch)

All product names are trademarks or registered trademarks of their respective companies. EIZO, the EIZO Logo, and CuratOR are registered trademarks of EIZO Corporation. Specifications are subject to change without notice.